

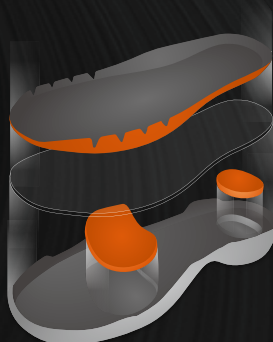
## FOOTWEAR

The production of sports shoes often selects material based on the uniqueness or special purpose of the sporting event in order to design specialized shoes for different sports. Badminton athletes employ special footwork in that they are often required to break left, right, turn or stop abruptly. Therefore, badminton shoes must provide excellent support and shock-absorption in order to ensure the stability of the foot and reduce sudden impacts while landing. Due to the nimble and swift characteristics of badminton, the shoes must also emphasize being lightweight. Wearing appropriate professional badminton shoes while playing badminton will enhance performance and decrease the potential risk of sports injuries.





# ENERGY SH-P9100 MAX



## ENERGYMAX 3.0

The new generation of highly elasticity material, with a 22% increase in rebound ability. The shock absorbency increase by 6%, which can dramatically enhance the instant resilience, shock absorption and cushioning effect to shocks.



### SH-P9100

D (Red / Black)/E (Yellow / Black)/FG (Blue / Fluorescent Green)

|         |  |
|---------|--|
| UPPER   | PU Leather + V-Durable + Double Mesh                                 |
| MIDSOLE | Light Resilient EVA + ENERGYMAX 3.0 + TPU + Carbon Power + Solid EVA |
| OUTSOLE | Rubber + D.MAX   |
| SIZE    | 220 mm - 295 mm  |



SUPPORT

## TRINETIC 2.0

The new revolutionized TRINETIC 2.0 triple-effect energy conversion system has an upgraded shock absorption. Through the recombination of newly developed materials, it has a 35% increase in shock absorption during high-impact when compared with the first generation to achieve excellent ability and comfortable wear.







# PROFESSIONAL



Q



G



## SH-LYD Q (Rose Red) / G (Fluorescent Green)

|         |   |
|---------|---|
| UPPER   | PU Leather + V-Durable + Double Mesh                          |
| MIDSOLE | Resilient EVA + ENERGymax3.0 + TPU + Carbon Power + Solid EVA |
| OUTSOLE | Rubber  |
| SIZE    | 230 mm - 295 mm   |



AO



F



## SH-P7500 AO (White + Orange) / F (Blue + Black)

|         |  |
|---------|--|
| UPPER   | PU Leather + V-Durable + Double Mesh                       |
| MIDSOLE | Resilient EVA + ENERGymax + TPU + Carbon Power + Solid EVA |
| OUTSOLE | Rubber   |
| SIZE    | 220 mm - 295 mm  |



www.victorsport.com

|            |            |     |     |     |      |     |     |      |     |      |     |     |     |     |      |     |      |
|------------|------------|-----|-----|-----|------|-----|-----|------|-----|------|-----|-----|-----|-----|------|-----|------|
| SIZE CHART | EUR        | 35  | 36  | 37  | 37.5 | 38  | 39  | 39.5 | 40  | 40.5 | 41  | 42  | 43  | 44  | 44.5 | 45  | 45.5 |
|            | US         | 4   | 4.5 | 5   | 5.5  | 6   | 6.5 | 7    | 7.5 | 8    | 8.5 | 9   | 9.5 | 10  | 10.5 | 11  | 11.5 |
|            | US (woman) | 5.5 | 6   | 6.5 | 7    | 7.5 | 8   | 8.5  | 9   | 9.5  | 10  | -   | -   | -   | -    | -   | -    |
|            | mm         | 220 | 225 | 230 | 235  | 240 | 245 | 250  | 255 | 260  | 265 | 270 | 275 | 280 | 285  | 290 | 295  |
|            |            |     |     |     |      |     |     |      |     |      |     |     |     |     |      |     |      |



SH-LYD-G



SH-LYD-Q



# PROFESSIONAL

## ALL-AROUND



O



F



G



### SH-A850

O (Orange + Dark Grey) / F (Blue + Silver) / G (Fluorescent Green + Silver)

|         |  |
|---------|--|
| UPPER   | PU Leather + V-Durable + Mesh                              |
| MIDSOLE | Resilient EVA + ENERGYMAX + TPU + Carbon Power + Solid EVA |
| OUTSOLE | Rubber   |
| SIZE    | 220 mm - 295 mm  |



AC



W



### SH980

AC (White + Black) / W (White + Copper)

|         |  |
|---------|--|
| UPPER   | PU Leather + V-Durable + Mesh                              |
| MIDSOLE | Resilient EVA + ENERGYMAX + TPU + Carbon Power + Solid EVA |
| OUTSOLE | Rubber   |
| SIZE    | 220 mm - 295 mm  |



AI



### SH980L Ladies

AI (White + Pink)

|         |  |
|---------|--|
| UPPER   | PU Leather + V-Durable + Mesh                              |
| MIDSOLE | Resilient EVA + ENERGYMAX + TPU + Carbon Power + Solid EVA |
| OUTSOLE | Rubber   |
| SIZE    | 220 mm - 260 mm  |



F



D



E



### SHW503

F (White + Blue) / D (White + Red) / E (Yellow + Black)

|         |                               |
|---------|-------------------------------|
| UPPER   | PU Leather + Mesh             |
| MIDSOLE | EVA + ENERGYMAX + Nylon Sheet |
| OUTSOLE | Rubber                        |
| SIZE    | 220 mm - 295 mm               |

|            |            |     |     |     |      |     |     |      |     |      |     |     |     |     |      |     |      |
|------------|------------|-----|-----|-----|------|-----|-----|------|-----|------|-----|-----|-----|-----|------|-----|------|
| SIZE CHART | EUR        | 35  | 36  | 37  | 37.5 | 38  | 39  | 39.5 | 40  | 40.5 | 41  | 42  | 43  | 44  | 44.5 | 45  | 45.5 |
|            | US         | 4   | 4.5 | 5   | 5.5  | 6   | 6.5 | 7    | 7.5 | 8    | 8.5 | 9   | 9.5 | 10  | 10.5 | 11  | 11.5 |
|            | US (woman) | 5.5 | 6   | 6.5 | 7    | 7.5 | 8   | 8.5  | 9   | 9.5  | 10  | -   | -   | -   | -    | -   | -    |
|            | mm         | 220 | 225 | 230 | 235  | 240 | 245 | 250  | 255 | 260  | 265 | 270 | 275 | 280 | 285  | 290 | 295  |

## PROFESSIONAL



O



F



SG



### SH910

O (Orange + White) / F (Blue + White) / SG (Silver + Fluorescent Green)

**UPPER** PU Leather + Double Mesh

**MIDSOLE** Resilient EVA + ENERGYMAX + Nylon Sheet + TPU

**OUTSOLE** Rubber

**SIZE** 220 mm - 295 mm

## JUNIOR



E



AO



### SHC02

E (Yellow) / AO (White + Orange)

**UPPER** PU Leather + Mesh

**MIDSOLE** Resilient EVA + ENERGYMAX + Nylon Sheet

**OUTSOLE** Rubber

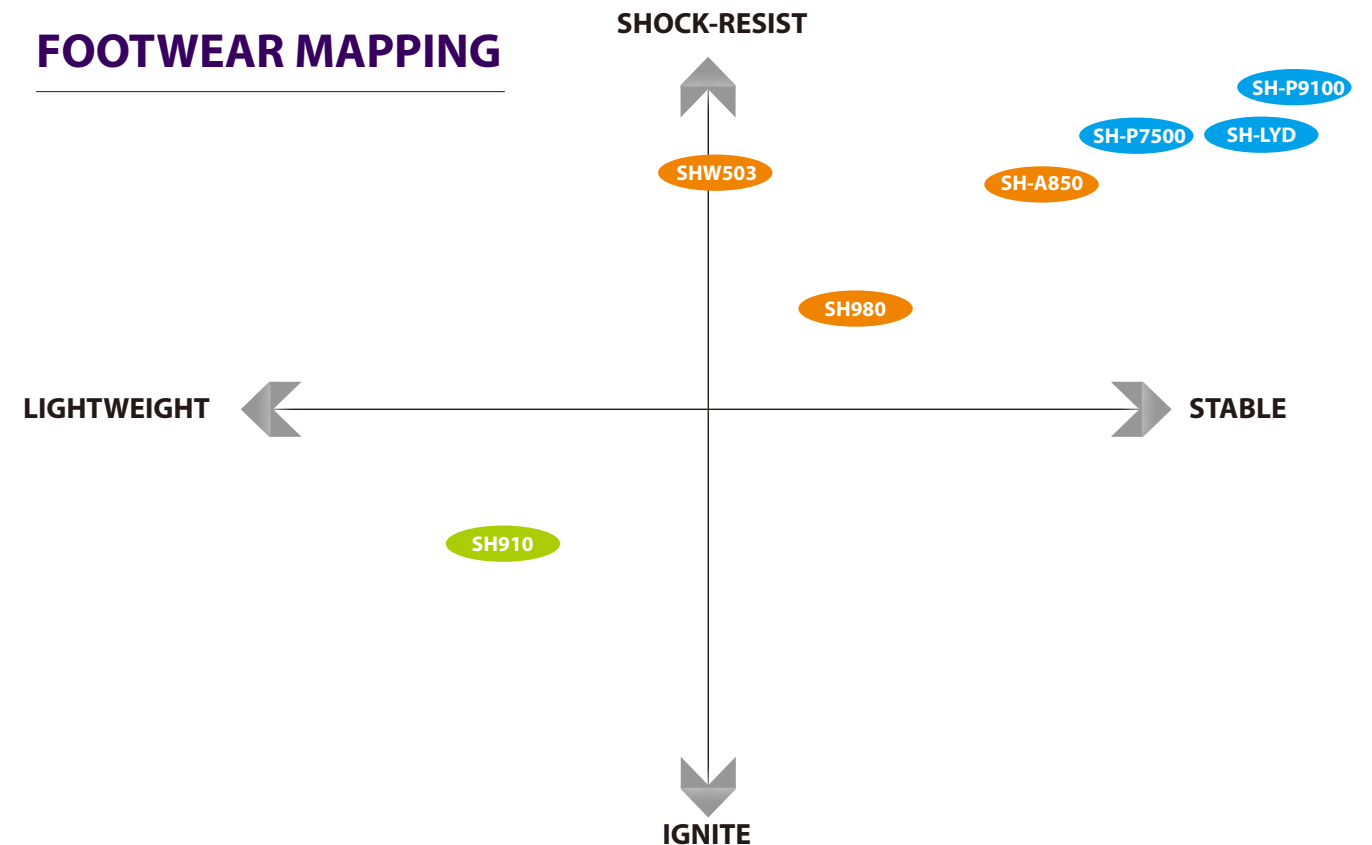
**SIZE** 190 mm, 200 mm, 205 mm, 210 mm, 220mm

| SIZE CHART | EUR        | 35  | 36  | 37  | 37.5 | 38  | 39  | 39.5 | 40  | 40.5 | 41  | 42  | 43  | 44  | 44.5 | 45  | 45.5 |
|------------|------------|-----|-----|-----|------|-----|-----|------|-----|------|-----|-----|-----|-----|------|-----|------|
|            | US         | 4   | 4.5 | 5   | 5.5  | 6   | 6.5 | 7    | 7.5 | 8    | 8.5 | 9   | 9.5 | 10  | 10.5 | 11  | 11.5 |
|            | US (woman) | 5.5 | 6   | 6.5 | 7    | 7.5 | 8   | 8.5  | 9   | 9.5  | 10  | -   | -   | -   | -    | -   | -    |
|            | mm         | 220 | 225 | 230 | 235  | 240 | 245 | 250  | 255 | 260  | 265 | 270 | 275 | 280 | 285  | 290 | 295  |

## VICTOR 3 TYPE OF FOOTWEAR

VICTOR present 3 types of footwear classification: 【ALL-AROUND】 , 【SUPPORT】 and 【SPEED】 combining four indicators : SHOCK-RESIST \ STABLE \ IGNITE and LIGHTWEIGHT, allowing you to choose the specialized badminton shoes that are most suitable to your badminton footwork.

### FOOTWEAR MAPPING



VICTOR uses high level material to make footwear that reduce the impact on the foot and increase the stability of footwear body foot encapsulation, allowing for faster speed of movement and the next step to be quickly taken.



Lateral and whole sole of foot stability systems reduce the inward turn of your feet when you move, lowering the chance of injury.



Badminton is a sport that requires speed and agility, the SPEED type of badminton footwear includes two characteristics: LIGHTWEIGHT and IGNITE.



# FOOTWEAR TECHNOLOGY

## STABLE

### TalonGuard

TalonGuard is a lateral stability technology which combines two levels of TPU. Like an eagle's claw, it is placed at the lateral forefoot to provide stability and also prevents pronation during lateral movement.



The outside of forefoot is designed using high-strength TPU. This significantly enhances the lateral stability during intense and rapid transfer of direction when playing badminton.



The three-dimensional carbon fiber sheet provides mid-sole stability and decreases the torsional strain on the foot's arch.

## SHOCK ABSORPTION AND BOUND

### ENERGYMAX3.0

The new generation of highly elasticity material, with a 22% increase in rebound ability. The shock absorbency increase by 6%, which can dramatically enhance the instant resilience, shock absorption and cushioning effect to shocks.

### ENERGYMAX+

The double layer pad combined with ENERGYMAX shock absorption and ENERGYMAX bound insole, can reduce impact of landing and increase rebound.

### ENERGYMAX Y

A High elasticity ENERGYMAX insole insert is placed at the forefoot to increase the rebound and cushion at the point of impact.

### ENERGYMAX >

ENERGYMAX reduces the impact of landing and aids in moving in the next movement. This effectively reduces the loss of momentum.



The new revolutionized TRINETIC 2.0 triple-effect energy conversion system has an upgraded shock absorption. Through the recombination of newly developed materials, it has a 35% increase in shock absorption during high-impact when compared with the first generation to achieve excellent ability and comfortable wear.



A new, completely upgraded lightweight, highly resilient, and durable midsole, which has a 16% increase in durability when compared to the original high resilient EVA. It improves the life-span of shoes, reduced 19% of weight, flexibility increased by 5%, and lowered muscle burden in intensive exercises, which allows one to take agile paces quickly.



## SHOCK ABSORPTION AND BOUND



### LIGHTWEIGHT MIDSOLE

The ultralight material used for mid-sole is much lighter than ordinary EVA. Lightweight, strong and resistant to deformation, this material is capable of absorbing part of external impacts and providing excellent cushion.

### Resilient EVA

Highly resilient midsole material is more durable and retains its shape better. It not only provides the basic stability and shock absorption but also increases flexibility and increases the reaction time while changing directions.



## EMBRACE



### VENTI-WRAP

A sock-like tongue design accompanied with the three dimensional mesh fabric wrap around the foot providing a more responsive and comfortable feel.

### BRACE TEK

BRACE TEK technology provides more comfort and safety feeling to the foot, which gives more stability throughout the entire shoe.



## DURABILITY



This is a special ultra-abrasion resistance soft rubber that provide excellent grip, slip resistance and wear resistance.

### V-Durable

A thin film is applied over the soft and high-density PU leather to provide better strength and durability.



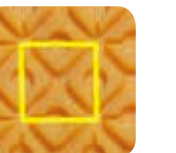
## OTHERS

### V-BRAKE





The V-shaped square design allows a light-weight and minimized landing area, while providing the anti-slip for vertical and lateral movement. This gives you more responsive and agile footwork while providing additional durability.

### RADIATION

Coping with the asterisk steps, the center is the rounded-shape design surrounded by triangular shapes. The radiation pattern provides more grip on the court during lateral and vertical movements. The small lump pattern distribution adds additional grip as the sensor and increases the grip.



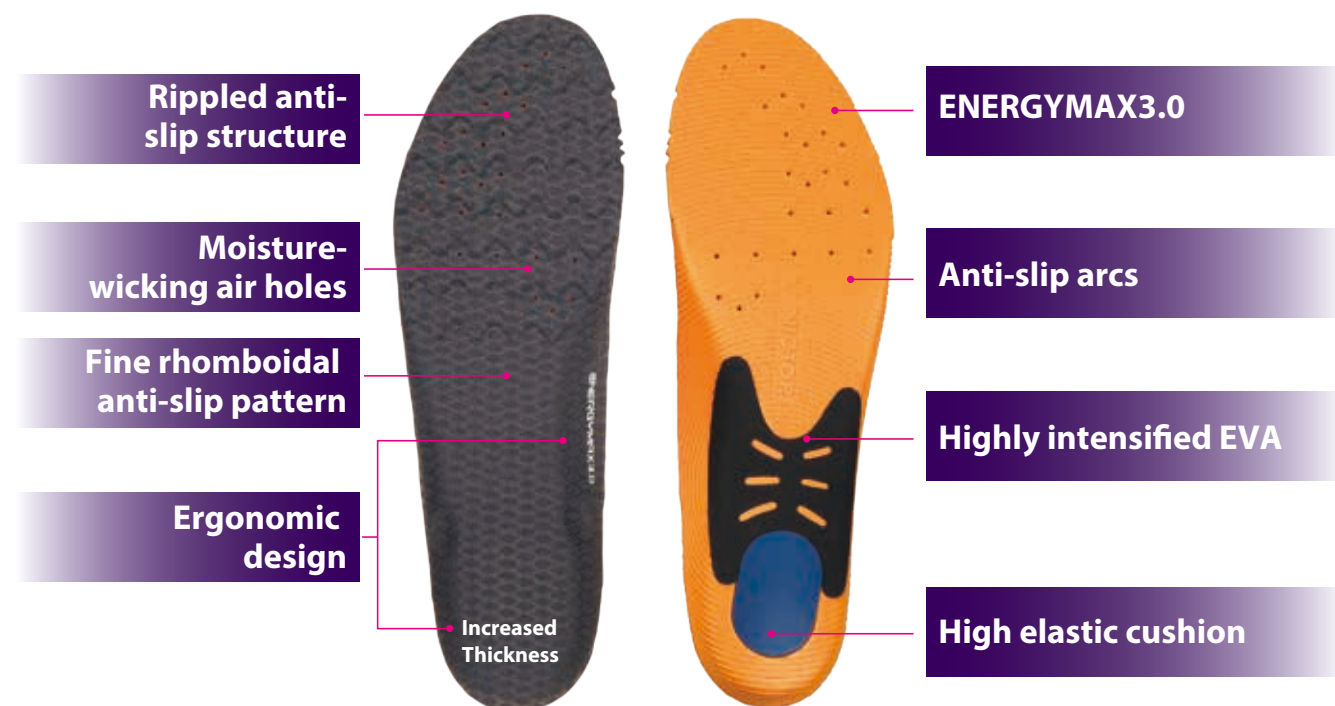
FOOTWEAR SPEC CHART

|                            |  |  |   |  |  |  |   |   |  | JUNIOR  |  |  |
|----------------------------|---|--|---|---|--|---|---|---|---|---|--|--|
| MODEL                      | SH-P9100  | SH-LYD   | SH-P7500  | SH-A850   |  | SH980   | SH980L  | SHW503  | SH910   | SHC02   |  |  |
| COLOR                      | D (Red / Black)/<br>E (Yellow / Black)/<br>FG (Blue / Fluorescent Green)          | Q(Rose Red)/<br>G (Fluorescent Green)                                  | AO (White / Orange)/<br>F (Blue / Black)                            | F (Blue / Silver)/<br>O (Orange / Dark Grey)/<br>G (Fluorescent Green / Silver)     |  | W (White / Copper)/<br>AC(White / Black)  | Al (White / Pink)   | D (White / Red)/<br>F (White / Blue)/<br>E (Yellow / Black) | F (Blue / White)/<br>O(Orange / White)/<br>SG (Silver / Fluorescent Green)          | E (Yellow)/<br>AO (White / Orange)            |  |  |
| UPPER                      | PU Leather + V-Durable<br>+ Double Mesh   | PU Leather + V-Durable<br>+ Double Mesh                                | PU Leather + V-Durable<br>+ Double Mesh                             | PU Leather + V-Durable<br>+ Mesh  |  | PU Leather + V-Durable<br>+ Mesh  | PU Leather + V-Durable<br>+ Mesh                                    | PU Leather + Mesh   | PU Leather + Double Mesh  | PU Leather + Mesh                             |  |  |
| MIDSOLE                    | Light Resilient EVA<br>+ ENERGYMAX 3.0 + TPU<br>+ Carbon Power<br>+ Solid EVA     | Resilient EVA<br>+ ENERGYMAX3.0 + TPU<br>+ Carbon Power<br>+ Solid EVA | Resilient EVA<br>+ ENERGYMAX + TPU<br>+ Carbon Power<br>+ Solid EVA | Resilient EVA<br>+ ENERGYMAX + TPU<br>+ Carbon Power<br>+ Solid EVA                 |  | Resilient EVA<br>+ ENERGYMAX + TPU<br>+ Carbon Power<br>+ Solid EVA                 | Resilient EVA<br>+ ENERGYMAX + TPU<br>+ Carbon Power<br>+ Solid EVA | EVA + ENERGYMAX<br>+ Nylon Sheet                            | Resilient EVA<br>+ ENERGYMAX<br>+ Nylon Sheet + TPU                                 | Resilient EVA<br>+ ENERGYMAX<br>+ Nylon Sheet |  |  |
| OUTSOLE                    | Rubber + D.MAX  | Rubber   | Rubber  | Rubber  |  | Rubber  | Rubber  | Rubber  | Rubber  | Rubber  |  |  |
| (mm)<br>Size Range         | 220 mm - 295 mm   | 230 mm - 295 mm  | 220 mm - 295 mm   | 220 mm - 295 mm   |  | 220 mm - 295 mm   | 220 mm - 260 mm   | 220 mm -295 mm  | 220 mm - 295 mm   | 190 mm, 200 mm,<br>205 mm, 210 mm,<br>220mm   |  |  |
| Ladies                     | •   |  |   |   |  |   |   |   |   |   |  |  |
| Junior                     |   |  |   |   |  |   |   |   |   | •   |  |  |
| TalonGuard                 | •   |  |   |   |  |   |   |   |   |   |  |  |
| LS-S                       | •   |  | •   | •   |  | •   | •   |   |   |   |  |  |
| CARBON POWER               | •   | •  | •   | •   |  | •   | •   |   |   |   |  |  |
| ENERGYMAX3.0               | •   | •  |   |   |  |   |   |   |   |   |  |  |
| ENERGYMAX+                 |   |  |   | •   |  |   |   |   |   |   |  |  |
| ENERGYMAX REBOUND          | •   |  |   | •   |  | •   | •   | •   | •   |   |  |  |
| ENERGYMAX SHOCK ABSORPTION | •   |  |   | •   |  | •   | •   | •   | •   | •   |  |  |
| TRINETIC2.0                | •   |  |   |   |  |   |   |   |   |   |  |  |
| Light Resilient EVA        | •   |  |   |   |  |   |   |   |   |   |  |  |
| Resilient EVA              | •   |  |   | •   |  | •   | •   |   | •   | •   |  |  |
| VENTI-WRAP                 |   |  |   | •   |  | •   | •   |   |   |   |  |  |
| BRACE TEK                  | •   | •  | •   | •   |  | •   | •   | •   | •   | •   |  |  |
| D-MAX                      | •   |  |   |   |  |   |   |   |   |   |  |  |
| V-Durable                  | •   | •  | •   | •   |  | •   | •   |   |   |   |  |  |
| RADIATION                  | •   | •  | •   | •   |  | •   | •   | •   | •   |   |  |  |
| WIDE last                  |   |  |   | •   |  |   |   |   |   |   |  |  |

## SPORT SHOE SOLE

### Highly Resilient Sport Insoles

VICTOR multi-functional High Resilient Sporting Insoles feature the latest ENERGYMAX3.0 resilience enhancing technology, inserted with high elastic cushion for optimal foot fit and comfort. Additional rippled design and rhomboidal pattern for exceptional anti-slip effect.



- Comfort upgrade :  
ENERGYMAX 3.0 resilience enhancing technology features increased resilience up to 62% compared to conventional EVA materials, offering absolute efficiency and comfort. The inserted high elastic cushion are highly durable and provides perfect cushioning at impacts.
- Stability upgrade :  
Ergonomic design gives the ultimate foot arch and heel support, strengthening protection for intense movements. The highly intensified EVA under foot arch provides extra stability.
- Anti-slip upgrade :  
Rippled anti-slip structure is designed at the front-foot in computer-calculated spaces according to human foot arch to make the best grip during extreme movements, while the anti-slip arcs on the back enhances both its flexibility and the anti-slip effect.

### VT-XD8

#### Highly Resilient Sport Insoles

|                 |   |
|-----------------|---|
| <b>MATERIAL</b> | ENERGYMAX 3.0 + PORON   |
| <b>SIZE</b>     | XS (220 - 230 mm) S (235 - 245 mm)<br>M (250 - 260 mm) L (265 - 275 mm)<br>XL (280 - 290 mm) XXL (295 - 305 mm) |

## SPORT SOCKS

### Men



#### SK112 K/F

##### Sport Socks for Men

|                 |  |
|-----------------|--|
| <b>COLOR</b>    | Dark Grey / Blue   |
| <b>SIZE</b>     | 25-28 cm   |
| <b>MATERIAL</b> | 53% Cotton + 23% Absorbing Yarn + 19%Polyester<br>+ 3% Rubber + 2% Spandex |



#### SK131 D/F

##### Sport Socks for Men

|                 |   |
|-----------------|---|
| <b>COLOR</b>    | Red / Blue                                      |
| <b>SIZE</b>     | 25-28 cm  |
| <b>MATERIAL</b> | 76% Cotton + 19% Nylon + 3% Rubber + 2% Spandex |

### Women



#### SK227 J/C

##### Sport Socks for Women

|                 |  |
|-----------------|--|
| <b>COLOR</b>    | Purple / Black                                   |
| <b>SIZE</b>     | 22-25 cm   |
| <b>MATERIAL</b> | 76% Cotton Combined + 19% Polyester + 5% Spandex |



#### SK231 M/Q

##### Sport Socks for Women

|                 |   |
|-----------------|---|
| <b>COLOR</b>    | Light Blue / Rose Red                           |
| <b>SIZE</b>     | 22-25 cm  |
| <b>MATERIAL</b> | 76% Cotton + 19% Nylon + 3% Rubber + 2% Spandex |

### Junior



#### SK021 F/Q

##### Sport Socks for Junior

|                 |   |
|-----------------|---|
| <b>COLOR</b>    | Blue / Rose Red   |
| <b>SIZE</b>     | 18-22 cm  |
| <b>MATERIAL</b> | 76% 32S Cotton Combed + 19% Polyester<br>+ 3% Rubber + 2% Spandex |